

**DRINKING WATER SOURCE PROTECTION PLAN**  
**FOR**  
**INTERLAKEN MUTUAL WATER COMPANY**  
**WASATCH COUNTY, UTAH**

**WATER SYSTEM NO. 26055**

**RECEIVED**

**JAN 22 1999**

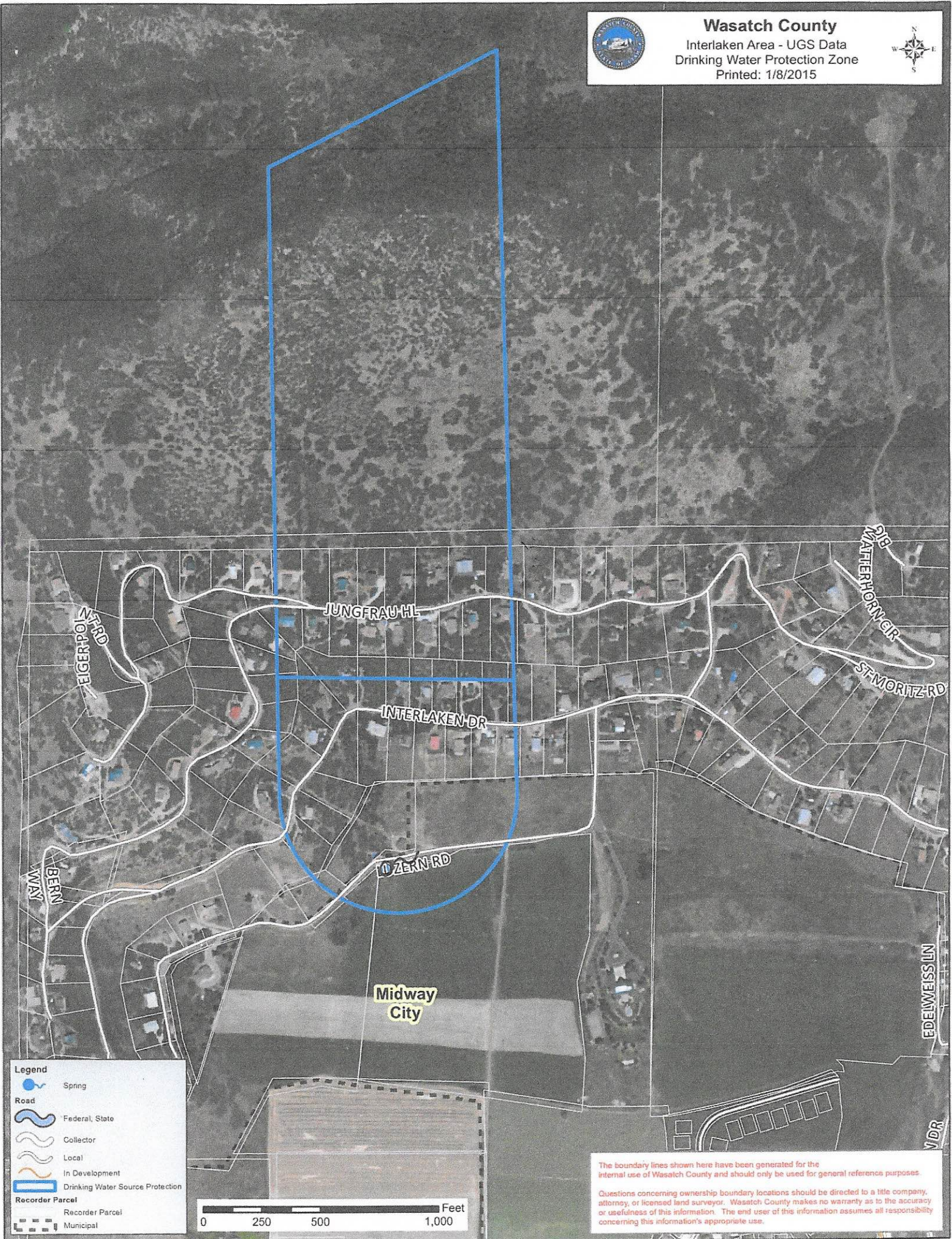
Utah Department of  
Environmental Quality  
Division of Drinking Water

**JANUARY 1999**

*429-674-011*  
**SOWBY AND BERG CONSULTANTS**  
**AND**  
**CARL H. CARPENTER, P. E.**  
**GROUND-WATER CONSULTANT**

## EXECUTIVE SUMMARY

Interlaken Mutual Water Company (System No. 26055) is located about 1 mile north of Midway, Utah in Wasatch County, and provides drinking water to 105 service connections from 2 water wells (Sources 01 and 02). Both sources obtain water from the Park City and Weber formations of Permian and Pennsylvanian age, respectively. These consolidated -rock formations include a carbonate aquifer consisting of a limestone/sandstone matrix which transmits water through secondary porosity defined as fractures, joints, and bedding planes. These discrete openings provide preferential flow paths or conduits for ground-water movement in the rock formations in a north-south direction, thus source protection zones were delineated by hydrogeologic mapping. Transmissivity and hydraulic conductivity were determined by step-drawdown pumping tests conducted at the time each well was completed in 1969 and 1975, respectively. Since the wells are only 20' apart, only one source- protection area was delineated which terminates at the Dutch Hollow Fault about 3400' north of the wells. The main source of potential contamination in the delineated protection zone is an existing sanitary sewer collection system serving Interlaken Subdivision which is operated and maintained by the Town of Midway, and is considered to be adequately regulated. Wasatch County also regulates land use and has restricted any potential contamination sources in the delineated source protection zone. In addition, the alluvial aquifer in Heber Valley has been classified by the Utah Board of Water Quality as Class IA (pristine aquifer); and, since part of the recharge area for the alluvial aquifer includes the delineated source protection zone for the Interlaken wells, no potential contamination sources are permitted in the classified area.



The boundary lines shown here have been generated for the internal use of Wasatch County and should only be used for general reference purposes.

Questions concerning ownership boundary locations should be directed to a title company, attorney, or licensed land surveyor. Wasatch County makes no warranty as to the accuracy or usefulness of this information. The end user of this information assumes all responsibility concerning this information's appropriate use.

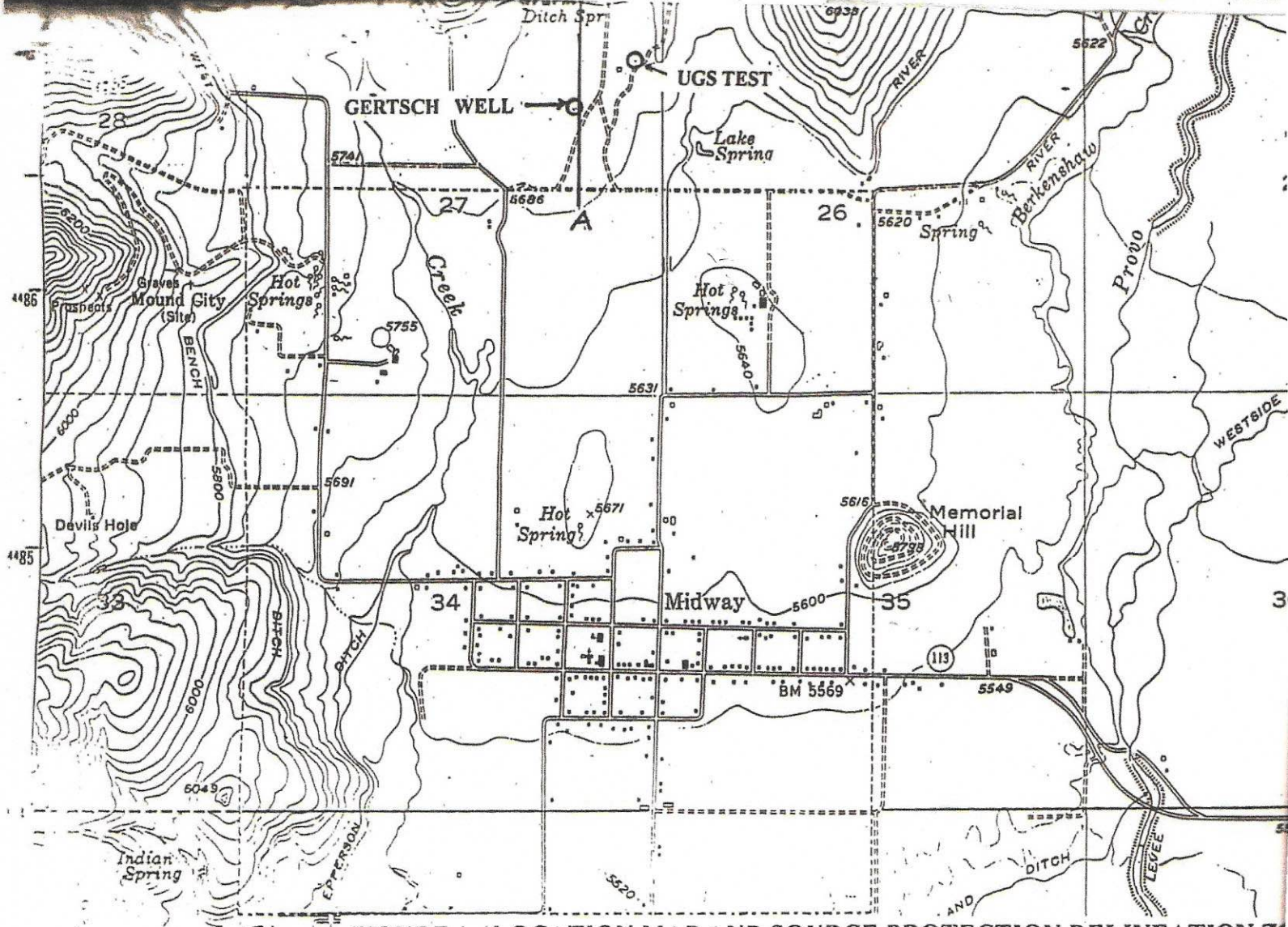
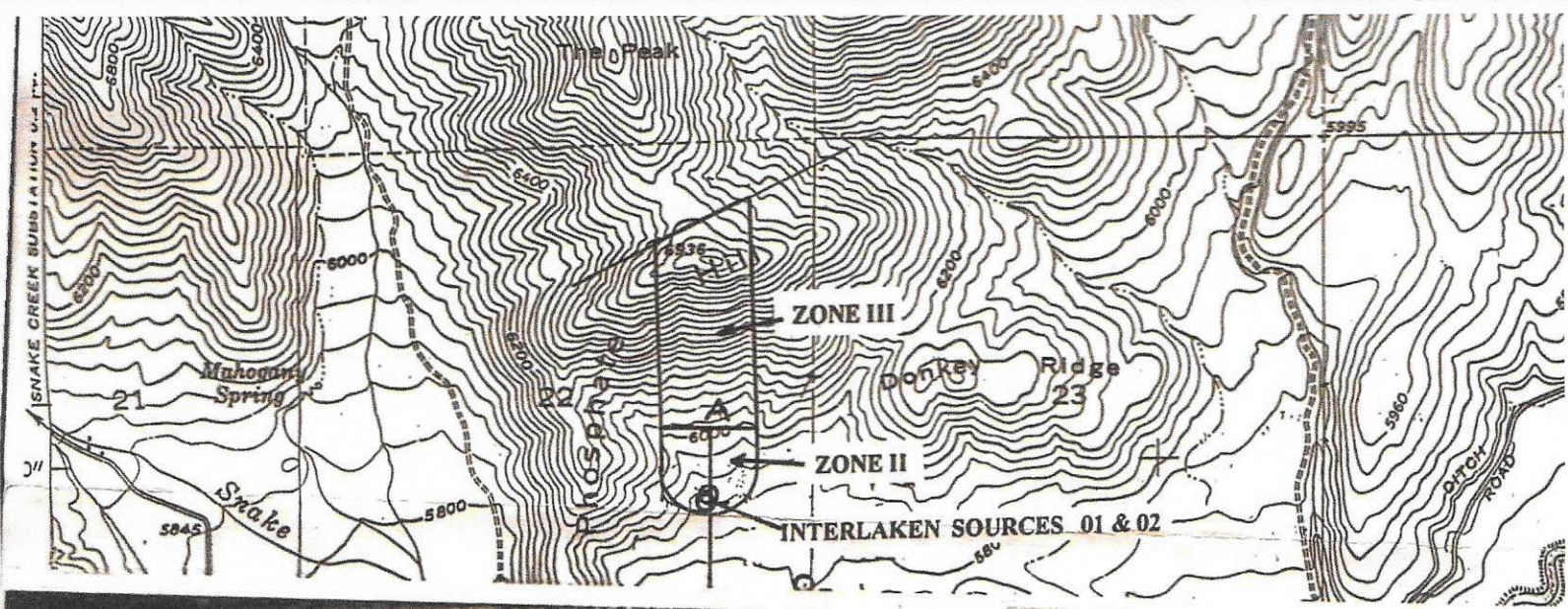


FIGURE 1 - LOCATION MAP AND SOURCE PROTECTION DELINEATION ZONE

INTERLAKEN MUTUAL WATER COMPANY (SYSTEM NO. 26055)

158 159 CHARLESTON, S.C. 2010 000 FEET (CENTRAL) 27°30' R 4 E

1. edited, and published by the Geological Survey